

Motors & Pumps- Hydraulic Pumps, Motors & Power Units

Gear Pumps - Rapid Response	12-1 — 12-6
Hydraulic Pumps - Check Valves	12-7
Hydraulic Pumps - Power Units	12-8 — 12-9
Hydraulic Pumps - Vane Pump	12-10
Motors	12-11 — 12-13

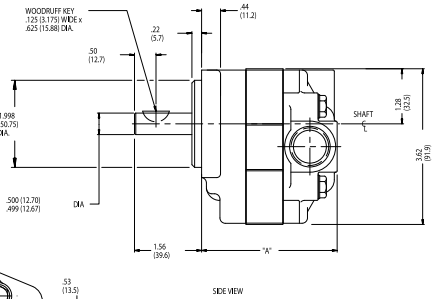
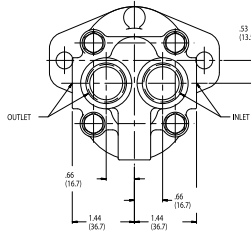
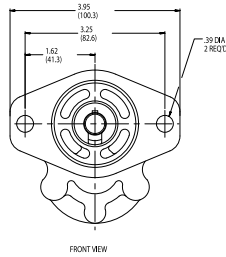
If you can't find it, your local Parker distributor can!

Just because it's not in our catalog doesn't mean you can't get it. To find exactly what you need, contact your local Parker distributor today. We can often provide 24-hour delivery direct from our factories to over 12,000 distribution locations worldwide. Our business is keeping you on the move.

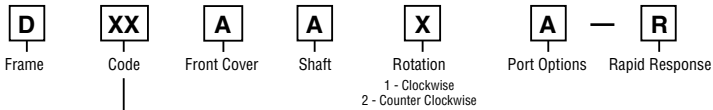
General Description: Displacement: See Code
 Mounting Flange: SAE 'AA' 2-Bolt
 Ports: SAE O-Ring – Side
 Shaft: 1/2" Keyed Shaft
 Seal Material: Nitrile
 Rotation: Clockwise or Counter Clockwise

GEAR PUMPS

D RAPID RESPONSE



Model Code



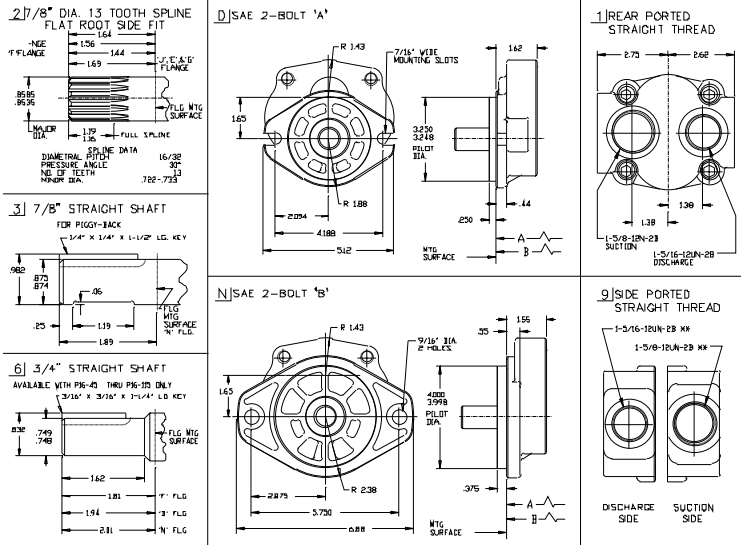
Code	CC	CIR	Inlet Port	Outlet Port	Dim A	Dim B	Order Number	
							Clockwise	Counter Clockwise
05	1.87	0.114	SAE-10	SAE - 8	2.48	N/A	D05AA2A-R	D05AA1A-R
07	2.76	0.168	SAE-10	SAE - 8	2.57	N/A	D07AA2A-R	D07AA1A-R
09	3.45	0.210	SAE-10	SAE - 8	2.64	N/A	D09AA2A-R	D09AA1A-R
11	4.29	0.262	SAE-10	SAE - 8	2.72	N/A	D11AA2A-R	D11AA1A-R
14	5.38	0.329	SAE-10	SAE - 8	2.83	N/A	D14AA2A-R	D14AA1A-R
17	6.62	0.404	SAE-10	SAE - 8	2.96	N/A	D17AA2A-R	D17AA1A-R
22	8.55	0.522	SAE-10	SAE - 8	3.15	N/A	D22AA2A-R	D22AA1A-R



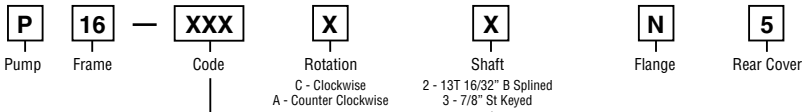
General Description: Displacement: See Code
 Mounting Flange: SAE 'B' 2-Bolt
 Ports: SAE O-Ring – Side
 Shaft: See Code
 Seal Material: Shaft – Viton®
 Rotation: Clockwise or Counter Clockwise

GEAR PUMPS

P16 RAPID RESPONSE



Model Code

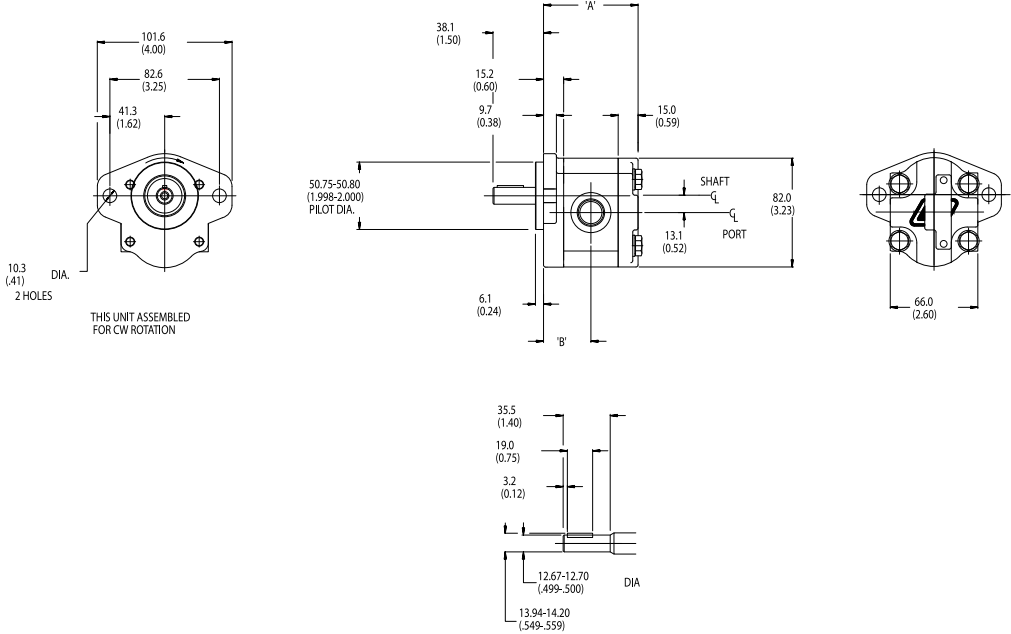


Code	CC	CIR	Inlet Port	Outlet Port	Dim A	Dim B	Shaft	Order Number	
								Clockwise	Counter Clockwise
85	27.2	1.66in ³ /rev	Side #20	Side #12	3.90	4.91	3	0301566R	0301911R
115	36.7	2.24in ³ /rev	Side #20	Side #12	4.22	5.23	3	0301562R	0301580R
150	48.0	2.93in ³ /rev	Side #20	Side #12	4.59	5.60	3	0301567R	0301588R
180	57.5	3.51in ³ /rev	Side #20	Side #12	4.91	5.92	3	0301565R	0301564R
85	27.2	1.66in ³ /rev	Side #20	Side #12	3.90	4.91	2	0120329R	0120330R
115	36.7	2.24in ³ /rev	Side #20	Side #12	4.22	5.23	2	0120615R	0120614R
150	48.0	2.93in ³ /rev	Side #20	Side #12	4.59	5.60	2	0120769R	0120768R
180	57.5	3.51in ³ /rev	Side #20	Side #12	4.91	5.92	2	0120915R	0120916R

General Description: Displacement: See Code
 Mounting Flange: SAE 'AA' 2-Bolt
 Ports: SAE O-Ring – Side
 Shaft: 1/2" Keyed Shaft
 Seal Material: Nitrile
 Rotation: Clockwise or Counter Clockwise

GEAR PUMPS

PGP505 RAPID RESPONSE



Model Code

- PG Gear Design
 P Pump
 505 Frame
 A Style
 XXXX Displacement
 X Rotation
 J1 Shaft
 H1 Shaft End Cover
 N Seal Material
 D3 Side Inlet
 D2 Side Outlet
 B1 Rear Inlet
 B1 Rear Outlet

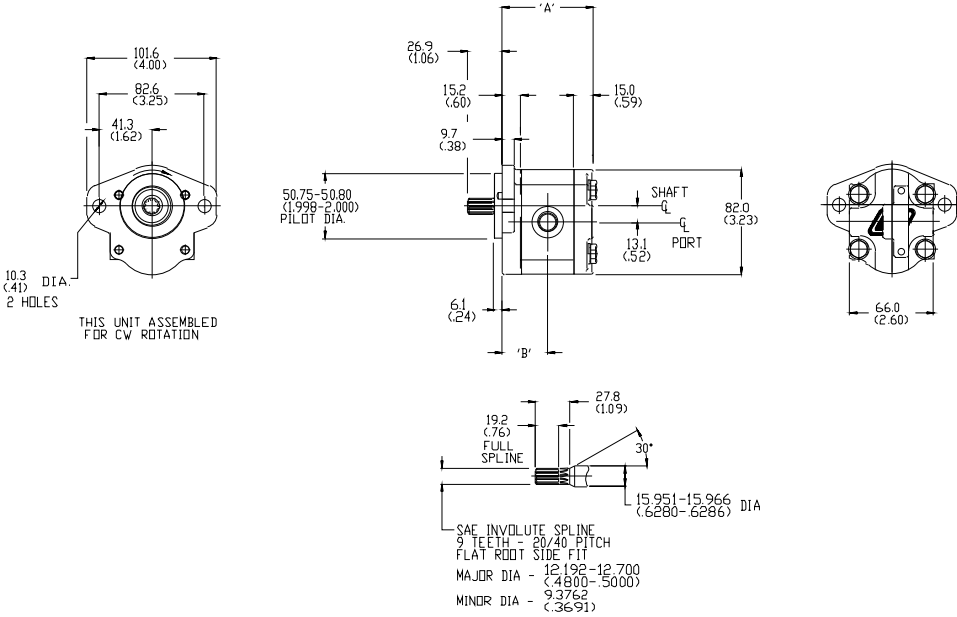
Code	CC	CIR	Inlet Port	Outlet Port	Dim A	Dim B	Order Number	
							Clockwise Code C	Counter Clockwise Code A
0020	2	0.12	3/4"-16 UNF	9/16"-18 UNF	2.70"	1.35"	331-9110-267R	331-9110-275R
0030	3	0.18	3/4"-16 UNF	9/16"-18 UNF	2.81"	1.41"	331-9110-011R	331-9110-096R
0040	4	0.24	3/4"-16 UNF	9/16"-18 UNF	2.91"	1.46"	331-9110-010R	331-9110-097R
0050	5	0.31	3/4"-16 UNF	9/16"-18 UNF	3.02"	1.51"	331-9110-098R	N/A
0060	6	0.37	3/4"-16 UNF	9/16"-18 UNF	3.12"	1.56"	331-9110-101R	331-9110-100R



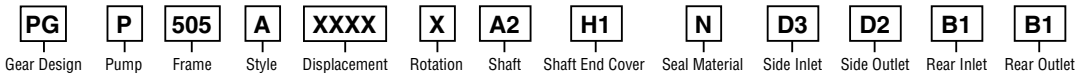
General Description: Displacement: See Code
 Mounting Flange: SAE 'AA' 2-Bolt
 Ports: SAE O-Ring – Side
 Shaft: SAE 'AA' 9-Tooth Splined Shaft
 Seal Material: Nitrile
 Rotation: Clockwise or Counter Clockwise

GEAR PUMPS

PGP505 RAPID RESPONSE



Model Code

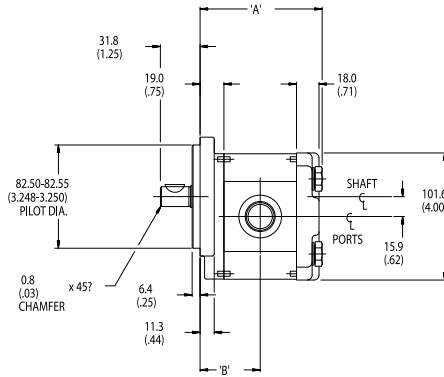
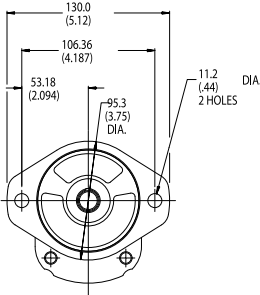
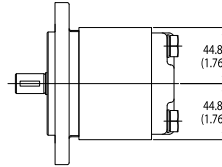
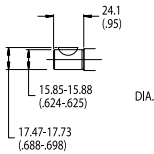


Code	CC	CIR	Inlet Port	Outlet Port	Dim A	Dim B	Order Number	
							Clockwise Code C	Counter Clockwise Code A
0020	2	0.12	3/4"-16 UNF	9/16"-18 UNF	2.70"	1.35"	331-9110-264R	331-9110-269R
0030	3	0.18	3/4"-16 UNF	9/16"-18 UNF	2.81"	1.41"	331-9110-265R	331-9110-268R
0040	4	0.24	3/4"-16 UNF	9/16"-18 UNF	2.91"	1.46"	331-9110-266R	331-9110-294R
0050	5	0.31	3/4"-16 UNF	9/16"-18 UNF	3.02"	1.51"	331-9110-262R	331-9110-295R
0060	6	0.37	3/4"-16 UNF	9/16"-18 UNF	3.12"	1.56"	331-9110-263R	331-9110-269R

General Description: Displacement: See Code
 Mounting Flange: SAE 'A' 2-Bolt
 Ports: SAE O-Ring – Side
 Shaft: SAE 'A' – 5/8" Keyed Shaft
 Seal Material: Nitrile
 Rotation: Clockwise or Counter Clockwise

GEAR PUMPS

PGP511 RAPID RESPONSE



Model Code

PG
P
511
A
XXXX
X
K1
H2
N
XX
XX
B1
B1

Gear Design Pump Frame Style Displacement Rotation Shaft Shaft End Cover Seal Material Side Inlet Side Outlet Rear Inlet Rear Outlet

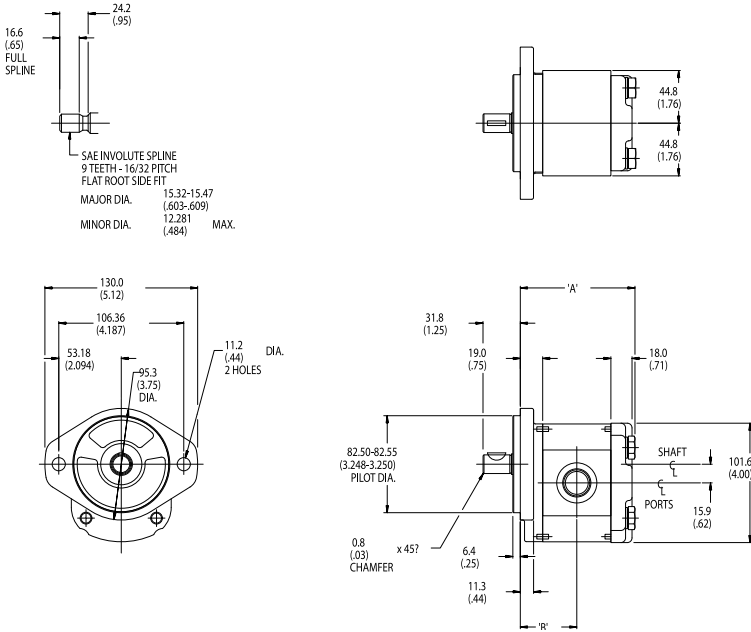
Code	CC	CIR	Inlet Port (Code)	Outlet Port (Code)	Dim A	Dim B	Order Number	
							Clockwise Code C	Counter Clockwise Code A
0070	7	0.43	1 1/16"-12 UN (D5)	7/8"-14 UNF (D4)	3.66"	1.80"	334-9111-069R	334-9112-043R
0100	10	0.61	1 1/16"-12 UN (D5)	7/8"-14 UNF (D4)	3.84"	1.89"	334-9111-068R	334-9112-042R
0110	11	0.67	1 1/16"-12 UN (D5)	7/8"-14 UNF (D4)	3.90"	1.92"	334-9111-067R	334-9112-136R
0140	14	0.85	1 5/16"-12 UN (D6)	1 1/16"-12 UN (D5)	4.08"	2.01"	334-9111-048R	334-9112-025R
0180	18	1.10	1 5/16"-12 UN (D6)	1 1/16"-12 UN (D5)	4.32"	2.13"	334-9111-065R	N/A
0210	21	1.28	1 5/16"-12 UN (D6)	1 1/16"-12 UN (D5)	4.58"	2.26"	334-9111-049R	N/A
0280	28	1.71	1 5/16"-12 UN (D6)	1 1/16"-12 UN (D5)	4.88"	2.41"	334-9111-063R	N/A



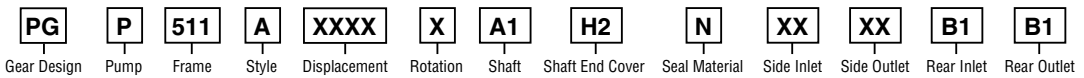
General Description: Displacement: See Code
 Mounting Flange: SAE 'A' 2-Bolt
 Ports: SAE O-Ring – Side
 Shaft: SAE 'A' – 9-Tooth Splined Shaft
 Seal Material: Nitrile
 Rotation: Clockwise or Counter Clockwise

GEAR PUMPS

PGP511 RAPID RESPONSE



Model Code

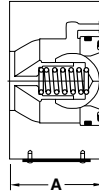
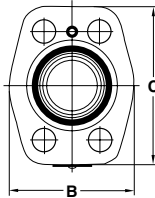


Code	CC	CIR	Inlet Port (Code)	Outlet Port (Code)	Dim A	Dim B	Order Number	
							Clockwise Code C	Counter Clockwise Code A
0070	7	0.43	1 1/16"-12UN (D5)	7/8"-14 UNF (D4)	3.66"	1.80"	334-9111-062R	334-9112-036R
0100	10	0.61	1 1/16"-12UN (D5)	7/8"-14 UNF (D4)	3.84"	1.89"	334-9111-061R	334-9112-035R
0110	11	0.67	1 1/16"-12UN (D5)	7/8"-14 UNF (D4)	3.90"	1.92"	334-9111-060R	334-9112-268R
0140	14	0.85	1 5/16"-12 UN (D6)	1 1/16"-12 UN (D5)	4.08"	2.01"	334-9111-046R	N/A
0180	18	1.10	1 5/16"-12 UN (D6)	1 1/16"-12 UN (D5)	4.32"	2.13"	334-9111-058R	334-9112-033R
0210	21	1.28	1 5/16"-12 UN (D6)	1 1/16"-12 UN (D5)	4.58"	2.26"	334-9111-057R	334-9112-032R
0280	28	1.71	1 5/16"-12 UN (D6)	1 1/16"-12 UN (D5)	4.88"	2.41"	334-9111-056R	334-9112-031R

General Description: The C5V flange mounted check valves are ideal for pump outlet ports, cylinder ports, manifolds, or any 3/4" to 1 1/2" Code 61 4-bolt flange port. These valves provide a compact, leak-free solution for any hydraulic circuit.

HYDRAULIC PUMP

CHECK VALVES - FLANGE MOUNTED



Series	A (in.)	B (in.)	C (in.)
C5V06	1.78	1.89	2.52
C5V08	1.78	2.36	2.91
C5V10	1.97	2.68	3.35
C5V12	1.97	3.15	4.09

Part No.	Model No.	Size	Max. Pressure	Rated Flow	Cracking Pressure ΔP	ΔP at rated flow	Seal Compound
026-75883-0	C5V06 311 B1 025	3/4"	5075 psi	26.5 gpm	14.5 psi	25 psi	Buna-N
026-75884-0	C5V08 310 B1 025	1"	5075 psi	52.5 gpm	7 psi	24 psi	Buna-N
026-75885-0	C5V10 310 B1 025	1 1/4"	4060 psi	105.5 gpm	7 psi	43 psi	Buna-N
026-75886-0	C5V12 310 B1 025	1 1/2"	3045 psi	198 gpm	7 psi	150 psi	Buna-N

General Description: The D, H, and V-Pak style power units are ideal for many applications. The space saving vertical style units are available with gear or piston pumps and are designed for quiet and leak-free operation.

HYDRAULIC PUMP

POWER UNITS



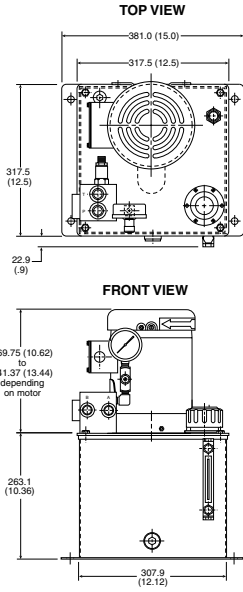
Power Unit Performance Data

Model Series	Tank (gal.)	Pump Flow, GPM @ 1725 RPM	Electric Motor (HP)	Max Pressure (PSI)
D-Pak	5	0.9 - 2.7	0.5 - 3	3000
H-Pak	10, 20, 30, 40	0.9 - 6.3	0.5 - 20	3000
V-Pak	10, 20, 30, 40	2.0 - 15.6	2 - 20	3000
V-Pak Low Profile	80	36.1	7.5 - 40	3000

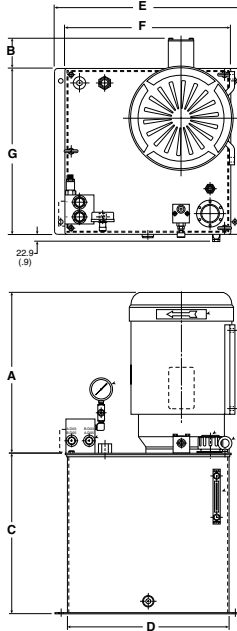
Part No.	Tank Size (gal.)/ Series	Filter (10 Micron)	Motor (HP)	Pump Flow @ 1800 RPM	Max Pressure (PSI)
D-Pak-DRIVEN1	5/D5	12AT	2	0.9	3000
D-Pak-DRIVEN2	5/D5	12AT	3	1.8	2570
H-Pak-DRIVEN1	10/H1	12AT	5	2.7	2900
H-Pak-DRIVEN2	20/H2	12AT	10	4.5	3000
V-Pak-DRIVEN1	20/V2	12AT	15	7.0	3000
V-Pak-DRIVEN2	30/V3	40CN	20	15.0	2100
V-Pak-DRIVEN3	80/V8	40CN	40	23.0	2800
V-Pak-DRIVEN4	80/V8	40CN	40	36.0	1600

**HYDRAULIC PUMP
 POWER UNITS**

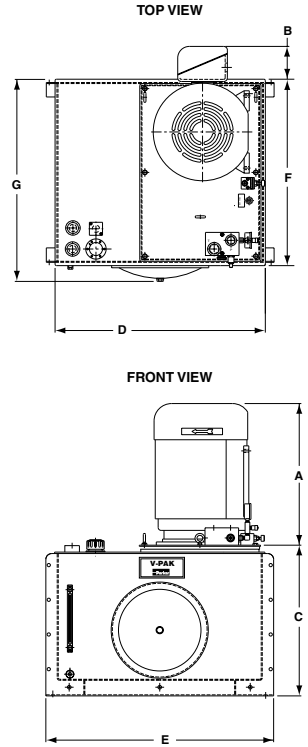
D-Pak



H-Pak & V-Pak



Low Profile V-Pak

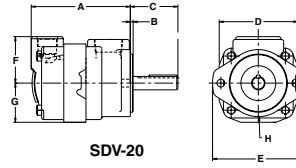
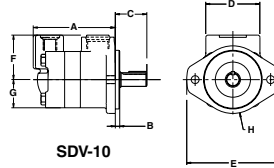
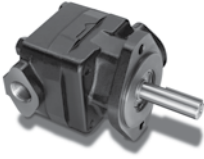


Series	H1	H2/V2	V3	V8
A*	10.50 to 16.28	11.75 to 19.3	11.75 to 19.3	16.6 to 24.7
B*	0.75	0.75 to 3.35	0.74 to 3.35	1.88 to 5.69
C	15.36	19.36	23.62	28.56
D	16.12	19.50	19.50	36.00
E	19.00	22.50	22.50	39.00
F	16.63	20.00	20.00	32.35
G	16.63	20.00	20.00	34.59

General Description: The SDV series are a fixed displacement vane pump ideal for low to mid pressure applications. Their compact design and low noise features make them well suited for compactors, test stands and remote pilot pumps.

HYDRAULIC PUMP

SDV VANE PUMP



Ring Size	A* (in.)	B (in.)	C Max (in.)	D	ØE (in.)	F (in.)	G (in.)	ØH (in.)
SDV-10	4.55 to 5.00	0.250	1.750	3.000	5.120	2.470	1.500	3.750
SDV-20	4.93 to 5.52	0.173	2.660	4.380	5.120	2.600	2.190	3.750

Part No.	Model No.	Displacement	GPM @ 1800 RPM	Max Pressure	Mounting	Shaft	Port Size	Max. RPM	Seal Compound	Rotation
SDV-10410-1/A	SDV10 1P4P 1A	13.1cc	6.2	2250 psi	2 bolt flange - 3.25" pilot diameter (SAE-A)	Straight Keyed (.75" dia)	Inlet: 1" NPTF Outlet: 1/2" NPTF	3000	Buna-N	Clockwise (viewed from shaft end)
SDV-10410-2/A	SDV10 1S4S 1A	13.1cc	6.2	2250 psi	2 bolt flange - 3.25" pilot diameter (SAE-A)	Straight Keyed (.75" dia)	Inlet: 1" 5/16-12 UNF-2B Outlet: 3/4"-16 UNF-2B	3000	Buna-N	Clockwise (viewed from shaft end)
SDV-10610-1/A	SDV10 1P6P 1A	19.5cc	9.3	2000 psi	2 bolt flange - 3.25" pilot diameter (SAE-A)	Straight Keyed (.75" dia)	Inlet: 1" NPTF Outlet: 1/2" NPTF	2100	Buna-N	Clockwise (viewed from shaft end)
SDV-10610-2/A	SDV10 1S6S 1A	19.5cc	9.3	2000 psi	2 bolt flange - 3.25" pilot diameter (SAE-A)	Straight Keyed (.75" dia)	Inlet: 1" 5/16-12 UNF-2B Outlet: 3/4"-16 UNF-2B	2100	Buna-N	Clockwise (viewed from shaft end)
SDV-20310-1/A	SDV20 1P8P 1A	26.5 cc	12.6	2250 psi	2 bolt flange - 3.25" pilot diameter (SAE-A)	Straight Keyed (.75" dia)	Inlet: 1" 1/4 NPTF Outlet: 3/4" NPTF	2400	Buna-N	Clockwise (viewed from shaft end)
SDV-20310-2/A	SDV20 1S8S 1A	26.5 cc	12.6	2250 psi	2 bolt flange - 3.25" pilot diameter (SAE-A)	Straight Keyed (.75" dia)	Inlet: 1" 5/8-12 UNF-2B Outlet: 1" 1/16-12 UNF-2B	2400	Buna-N	Clockwise (viewed from shaft end)

Features:

- Rugged Cast Iron construction
- Roller Vane Power Element – for high volume efficiency and long life
- Orbiting Commutator – for accurate timing and smooth low speed operation
- Full Flow Spline Lubrication – for extended spline life
- High Pressure Shaft Seal – for high back pressure operation without external drain lines
- Spline Geometry – for superior powertrain strength and long service motor life

Specifications:

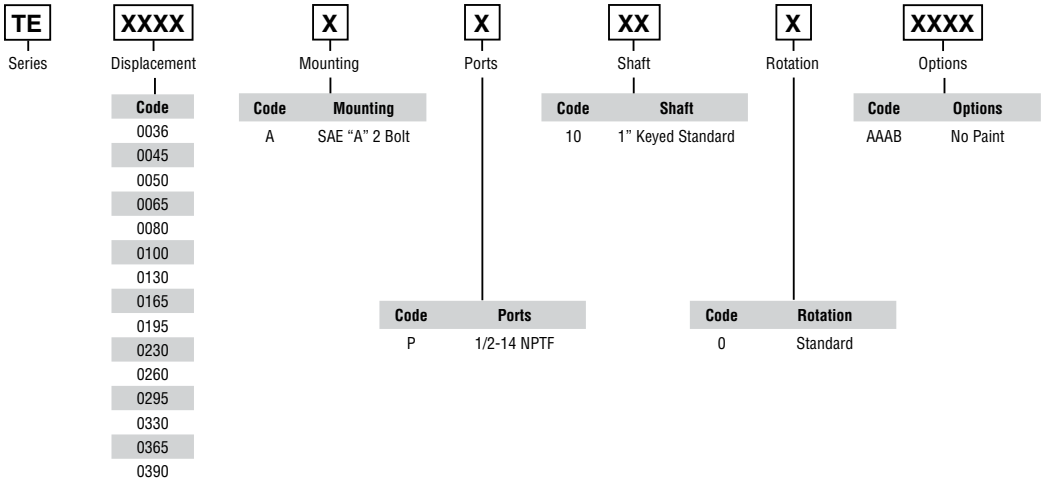
Maximum Oil Temperature: 200°F
 1.00" Shaft Diameter
 1/4" Key Shaft End
 Maximum Working Pressure: 2750 psid

Two Bolt SAE "A" Mount
 Bi-Rotational
 Port Size 1/2" NPT Thread

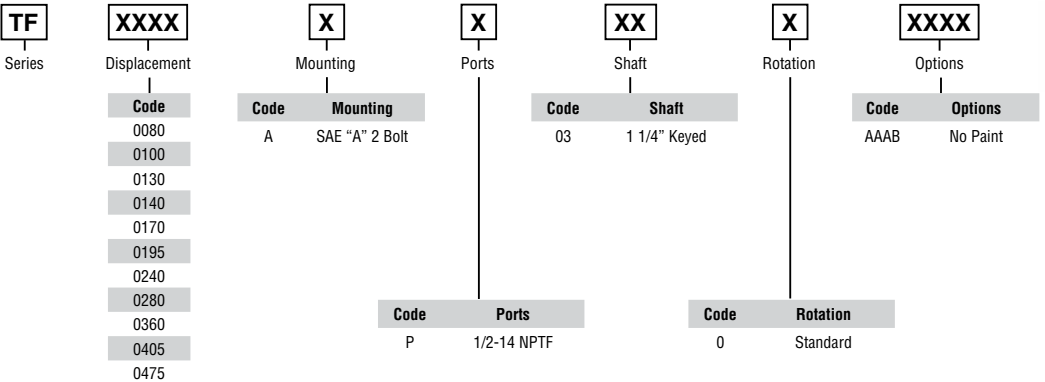
MOTORS

HOW TO ORDER

Series TE Motors



Series TF Motors



MOTORS

SERIES TE



Part No.	Geometric Displacement	Max. Speed @ Max. Intermittent Flow	Max. Oil Flow		Max. Differential Pressure		Max. Supply Pressure	Max. Torque		Max. Performance	Min. Starting Torque	
	Cubic in.	Int rev/min	Cont (g/min)	Int* (g/min)	Cont (PSI)	Int* (PSI)	max (PSI)	Cont (lb.-in.)	Int* (lb.-in.)	max HP	Cont (lb.-in.)	Int* (lb.-in.)
TE0036	2.2	1141	9	11	2030	2750	2900	483	630	11.4	389	460
TE0045	2.5	1024	9	11	2030	2750	2900	624	876	13.9	411	565
TE0050	3.0	1020	9	13	2030	2750	2900	796	1120	17.2	637	871
TE0065	4.0	877	12	15	2030	2750	2900	1106	1558	19.8	885	1211
TE0080	5.0	695	12	15	2030	2750	2900	1416	1947	23.2	1133	1515
TE0100	6.0	582	12	15	2030	2750	2900	1682	2337	23.4	1345	1819
TE0130	8.0	438	12	15	2030	2750	2900	2257	3116	23.2	1806	2423
TE0165	10.0	348	12	15	2030	2750	2900	2744	3846	22.8	2195	2992
TE0195	11.9	292	12	15	2030	2750	2900	3452	4673	23.4	2762	3637
TE0230	13.9	328	15	20	1740	2400	2900	3363	4554	23.8	2691	3637
TE0260	15.9	287	15	20	1595	2250	2900	3540	4870	22.4	2832	3977
TE0295	17.9	256	15	20	1450	2100	2900	3784	5180	21.0	2903	3939
TE0330	20.0	228	15	20	1450	1950	2900	3926	5312	19.8	3045	4014
TE0365	22.6	203	15	20	1378	1825	2900	4133	5728	18.2	3301	4223
TE0390	24.0	191	15	20	1233	1740	2900	3935	5562	16.8	3080	4090

* Intermittent operation rating applies to 10% of every minute.

Note: Performance data based on testing using 10W40 oil with viscosity of 43.1cSt (200 SUS) at 130° F. Performance data is typical. Actual data may vary slightly from one production motor to another.

MOTORS

SERIES TF



Part No.	Geometric Displacement	Max. Speed @ Max. Intermittent Flow	Max. Oil Flow		Max. Differential Pressure		Max. Supply Pressure max (PSI)	Max. Torque		Max. Performance max HP	Min. Starting Torque	
	Cubic in.	rev/min	Cont (g/min)	Int* (g/min)	Cont (PSI)	Int* (PSI)	(PSI)	Cont (lb.-in.)	Int* (lb.-in.)		Cont (lb.-in.)	Int* (lb.-in.)
TF0080	4.9	693	12	15	3000	4000	4350	1948	2621	28.8	1401	1811
TF0100	6.1	749	15	20	2250	3500	4350	1746	2813	33.4	1309	2155
TF0130	7.8	583	15	20	2000	3000	4350	2031	3148	29.1	1596	2460
TF0140	8.6	530	15	20	2000	3000	4350	2248	3477	29.2	1739	2728
TF0170	10.3	444	15	20	2000	3000	4350	2808	4324	30.5	2152	3404
TF0195	12.0	381	15	20	2000	3000	4350	3222	4971	30.1	2671	4142
TF0240	14.5	394	20	25	2000	3000	4350	3782	5928	37.1	3242	5058
TF0280	17.1	334	20	25	2000	3000	4350	4502	7029	37.3	3876	5946
TF0360	22.2	258	20	25	1880	2750	4350	5257	7788	26.8	4575	6898
TF0405	24.7	231	20	25	1850	2750	4350	5800	8106	29.7	5091	6978
TF0475	29.1	195	20	25	1645	2000	4350	6027	7528	23.3	5334	6548

* Intermittent operation rating applies to 10% of every minute.

Note: Performance data based on testing using 10W40 oil with viscosity of 43.1cSt (200 SUS) at 130° F. Performance data is typical. Actual data may vary slightly from one production motor to another.

