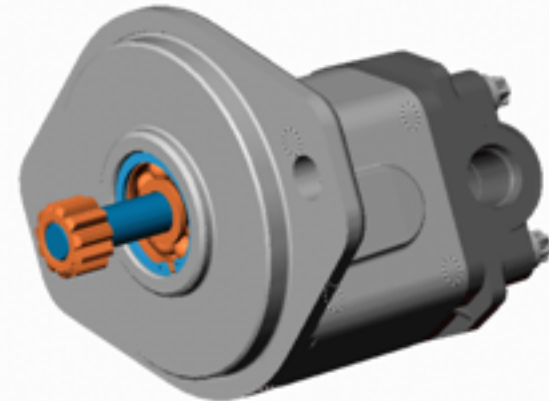


Haldex Fuel Transfer Pumps

The key focus of diesel engine manufacturers is emissions regulations going into effect now and in the future (2007 and 2010). The challenge is to meet the emission standards without increasing cost and without reducing engine performance.

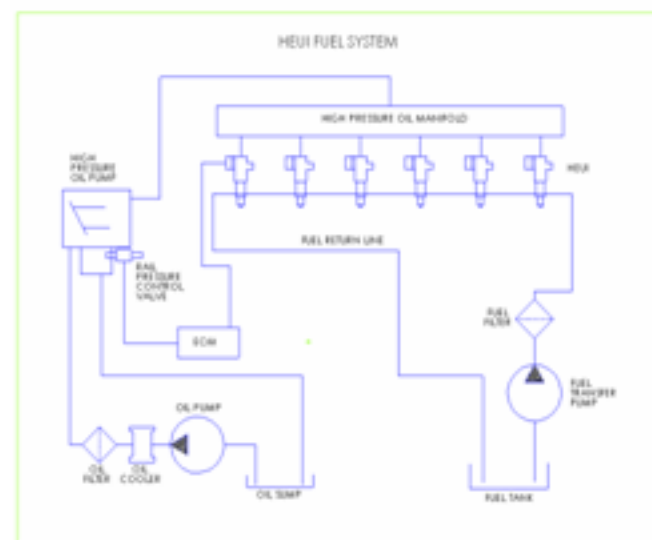
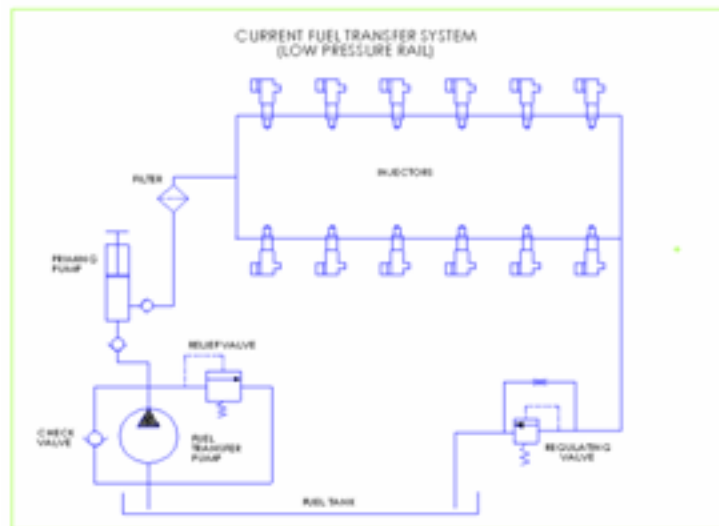
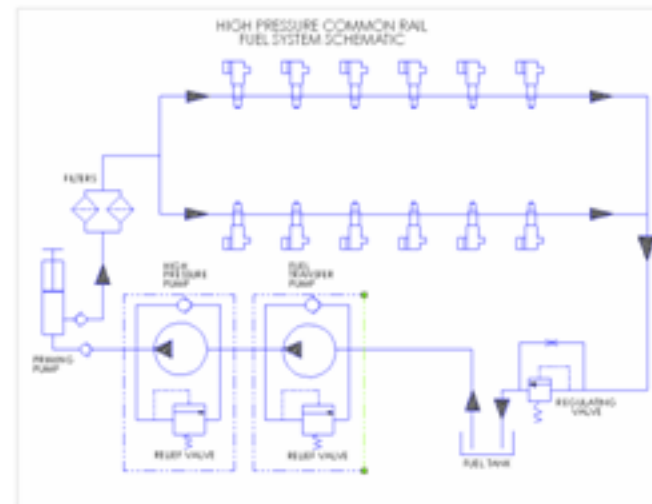
Haldex success in this area is attributed to the company working very closely with customers. Haldex provides robust product, which meets customer's quality system expectations and cost drivers. This is accomplished in continuous improvement environment where employees are trained to understand that variability and waste must be eliminated from our business and manufacturing processes.

Haldex Hydraulics Corporation Process Failure Mode & Effect Analysis								
ADDRESS: 25 101 15	SUPPLIER/PLANT NAME: PREPARED BY: JAWHET/SL	BRAND/HYDRAULICS DIV: HALDEX/BRAND LINE #: HALDEX/PROCESS ENGINEER	PROJECT/FRM DATE: FRM DATE/FRM DATE:	S.A. S.A. S.A.				
QUAL. ASSURANCE	PLANT NAME:	FRM FOR NEW MODEL: FRM 1148/00	FRM DATE:	ISSUE APPROVED BY:	DATE IN USE			
POTENTIAL EFFECTS OF FAILURE	S.E.P.	POTENTIAL CAUSES OF FAILURE	S.E.P.	EXISTING CONDITIONS			RECOMMENDED ACTIONS	RESPONSIBLE PERSONNEL FOR ACTION
				CURRENT PROCESS CONDITIONS	S	E		
<p>FRM 1148/00 THE FOLLOWING ASSUMPTIONS ARE MADE:</p> <ol style="list-style-type: none"> 1. ALL COMPONENTS MUST BE MANUFACTURED TO SPECIFICATION AND OPERATE CORRECTLY. 2. ALL COMPONENTS MUST BE ASSEMBLED TO ALL SPECIFICATIONS AND OPERATE CORRECTLY. 3. ALL COMPONENTS MUST BE ASSEMBLED TO ALL SPECIFICATIONS AND OPERATE CORRECTLY. 4. ALL OPERATIONS MUST BE PERFORMED IN ACCORDANCE WITH THE INSTRUCTIONS AND PROCEDURES. 5. ALL OPERATIONS MUST BE PERFORMED IN ACCORDANCE WITH THE INSTRUCTIONS AND PROCEDURES. 		<p>FRM 1148/00 THE FOLLOWING ASSUMPTIONS ARE MADE:</p> <ul style="list-style-type: none"> • OPERATOR TRAINING • MATERIAL QUALITY • ASSEMBLY PROCEDURE • ASSEMBLY EQUIPMENT • ASSEMBLY LOCATION • ASSEMBLY TIME • ASSEMBLY METHOD • ASSEMBLY MATERIAL 						
POTENTIAL CRITICAL LINK		CONTAMINATION OF INJECTOR SYSTEM		OPERATOR TRAINING INJECTOR FILTERING INJECTOR SYSTEM	2	10	NONE REQUIRED	



Haldex Fuel Transfer Pumps

Haldex Hydraulic Systems currently supplies fuel transfer pumps for common rail fuel injection systems to the leading manufacturers of diesel engine world wide. Haldex fuel transfer pumps are applied on low pressure common rail, high-pressure common rail and hydraulically actuated electronically controlled unit injection (HEUI) systems.



Haldex Fuel Transfer Pumps

Fuel pumps for class
5 -7 engines

Electric fuel pumps

Pump integrations

Value engineering

