

▼ Shown from left to right: BRC-25, BRC-46, BRP-306, BRP-606, BRP-106C

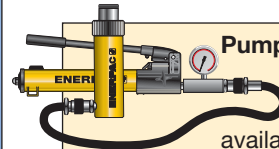


- High strength alloy steel construction
- Plunger blow-out protection to prevent over-extension
- Hard chrome-plated plunger for long life
- Baked enamel finish for increased corrosion resistance
- CR-400 coupler and dust cap included on all models
- Plunger wiper reduces contamination, extending cylinder life
- Single-acting spring-return
- Replaceable links on BRP-models

▼ Ship building, welding and Enerpac pull cylinders go hand in hand.



The Ultimate in Pulling Power



Pump and Cylinder Sets

All cylinders marked with an * are available as **sets** (cylinder, gauge, couplers, hose and pump) for your ordering convenience.

Page: 58



Gauges

Minimize the risk of overloading and ensure long, dependable service from your equipment. Refer to the

System Components section for a full range of gauges.

Page: 122

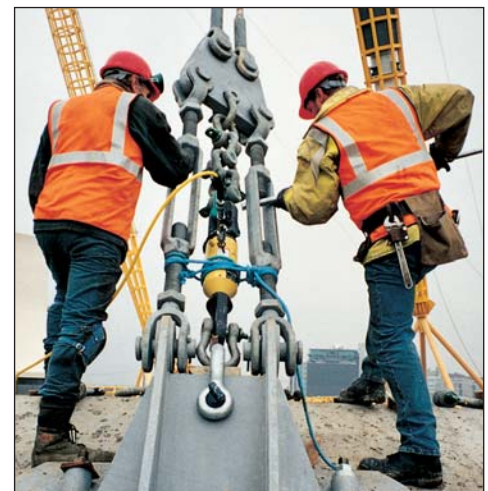


Attachments and Accessories

The BRC-25 and BRC-46 units have base, collar and plunger threads to affix a range of optional attachments and accessories, such as chains, saddles and extension tubes.

Page: 168

▼ To lift a load bearing mast into place, BRP cylinders were used to tension the supporting cables.



Single-Acting, Pull Cylinders

BRC Cylinder Mounting Dimensions (in)				
Model Number	Base Mounting Hole	Collar Thread	Collar Thread Length	Mtg. Thread Length
	V	W	X	Z
BRC-25	3/4"-14 NPT	1 1/2"-16 UN	.98	.67
BRC-46	1 1/4"-11 1/2 NPT	2 1/4"-14 UN	1.06	.98
BRC-106	M30 x 2	M85 x 2	1.02	.98

**BRC
BRP
Series**



Capacity:

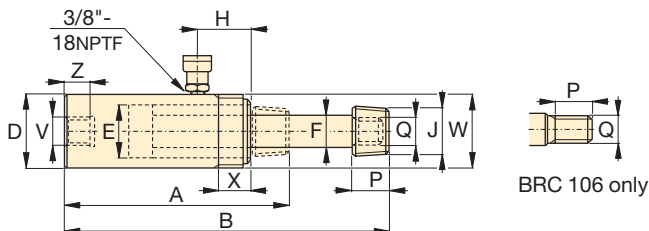
2.5-60 tons

Stroke:

5.00-6.00 inches

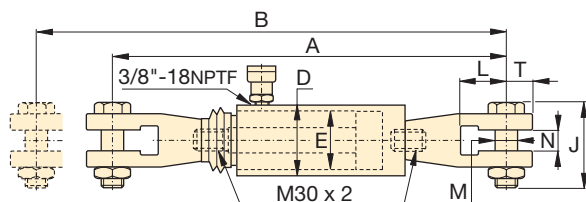
Maximum Operating Pressure:

10,000 psi

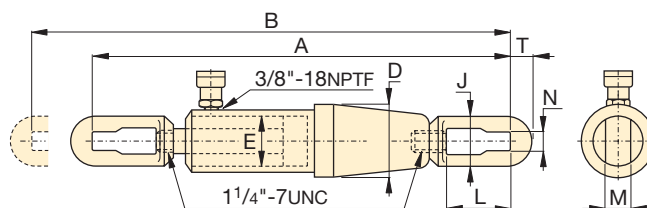


BRC-25 to BRC-106

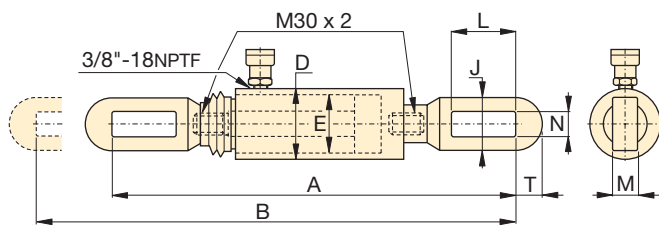
Cylinder Capacity	Stroke	Model Number	Cyl. Effect. Area	Oil Cap.	Collap. Height	Ext. Height	Outside Diam.	Cyl. Bore Diam.	Plgr. Diam.	Top to Inlet Port	Saddle Diameter	Plunger Thread Length	Plunger Outside Thread	Weight
(tons) [maximum]	(in)		(in ²)	(in ³)	A (in)	B (in)	D (in)	E (in)	F (in)	H (in)	J (in)	P (in)	Q	(lbs)
2.5 [2.7]	5.00	BRC-25	.55	2.76	10.44	15.44	1.89	1.13	.75	1.77	3/4"-14 NPT	1.13	1 1/16"-24	4
5 [5.6]	5.50	BRC-46	1.13	6.21	11.88	17.38	2.25	1.69	1.19	1.69	1 1/4"-11 1/2 NPT	1.25	1 3/16"-16	10
10 [11.6]	5.95	BRC-106	2.32	13.80	11.38	17.33	3.35	2.13	1.25	1.57	—	1.02	M30x2	21



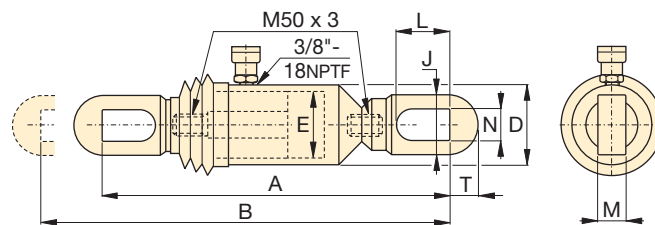
BRP-106C



BRP-306



BRP-106L



BRP-606

Cylinder Capacity	Stroke	Model Number	Cyl. Effect. Area	Oil Capacity	Collap. Height	Ext. Height	Outside Diam.	Cyl. Bore Diam.	Link Height	Link Opening	Link Thickness	Link Width	Slot to Link End	Weight
(tons) [maximum]	(in)		(in ²)	(in ³)	A (in)	B (in)	D (in)	E (in)	J (in)	L (in)	M (in)	N (in)	T (in)	(lbs)
10 [11.6]	6.00	BRP-106C*	2.32	13.80	23.11	29.06	3.35	2.13	4.72	2.44	1.19	1.38	1.26	35
	6.00	BRP-106L*	2.32	13.80	21.33	27.28	3.35	2.13	2.64	4.53	0.88	1.19	1.26	24
30 [36.1]	6.00	BRP-306*	7.22	43.27	42.72	48.82	5.39	3.50	4.49	5.71	1.38	1.57	1.97	106
60 [58.9]	6.00	BRP-606*	11.78	70.43	28.34	34.32	5.51	4.33	5.13	5.90	1.57	1.97	2.76	118

Note: BRP-106C, BRP-106L and BRP-606 are fitted with rubber bellows for rod protection.

*Available as a set. See note on previous page.