

▼ Shown from left to right: RD-2510, RD-96, RD-256, RD-41, RD-166



High Precision and High Cycle Performance



Speed Chart

See the Enerpac Cylinder Speed Chart in our 'Yellow Pages' to determine your approximate cylinder speed.

Page: 113

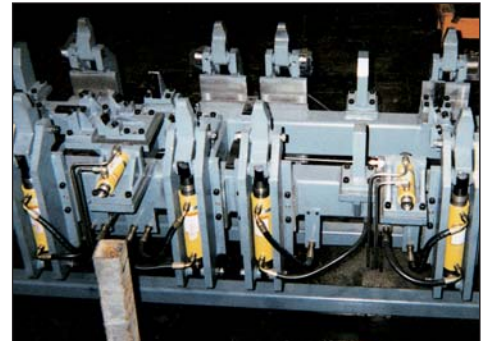


Golden Ring Design

Enerpac RD cylinders are provided with the Golden Ring Design, for long, trouble-free performance.

- Designed for long life, the best choice for production applications
- Unique mounting configurations simplify fixturing
- Baked enamel finish for increased corrosion resistance
- Double-acting operation develops force in both directions, providing maximum versatility
- Plunger wiper reduces contamination, extending cylinder life

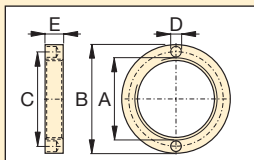
▼ Clamping application using Enerpac RD cylinders (with clevis eye attachments on both ends) for their high-pressure capability and mounting flexibility.



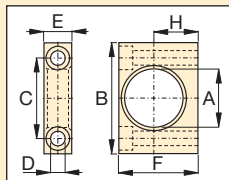
Cylinder Capacity (tons)	Stroke (in)	Model Number	Max. Cylinder Capacity (tons)		Cylinder Effective Area (in ²)		Oil Capacity (in ³)		Collap. Height A (in)	Ext. Height B (in)	Body Length C (in)	Outside Diam. D (in)	Cylinder Bore Diam. E (in)	Plunger Diam. F (in)
			Advance	Retract	Advance	Retract	Advance	Retract						
4	1.13	RD-41	4	2	.79	.34	.88	.39	7.31	8.44	6.38	2.00	1.00	.75
	3.13	RD-43	4	2	.79	.34	2.45	1.07	9.31	12.44	8.38	2.00	1.00	.75
	6.13	RD-46	4	2	.79	.34	4.81	2.10	12.31	18.44	11.38	2.00	1.00	.75
9	1.13	RD-91	9	5	1.77	.98	1.99	1.10	8.75	9.88	7.80	2.50	1.50	1.00
	3.13	RD-93	9	5	1.77	.98	5.52	3.07	10.78	13.91	9.80	2.50	1.50	1.00
	6.13	RD-96	9	5	1.77	.98	10.82	6.01	13.78	19.91	12.80	2.50	1.50	1.00
	10.13	RD-910	9	5	1.77	.98	17.89	9.94	17.78	27.91	16.81	2.50	1.50	1.00
16	6.25	RD-166	16	8	3.14	1.66	19.63	10.35	15.31	21.56	14.13	3.00	2.00	1.38
	10.25	RD-1610	16	8	3.14	1.66	32.20	16.98	19.31	29.56	18.11	3.00	2.00	1.38
25	6.25	RD-256	25	11	4.91	2.15	30.68	13.42	16.69	22.94	15.63	3.63	2.50	1.88
	10.25	RD-2510	25	11	4.91	2.15	50.31	22.01	20.69	30.94	19.61	3.63	2.50	1.88

Double-Acting, Precision Production Cylinders

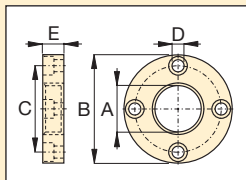
▼ RD CYLINDER ATTACHMENTS



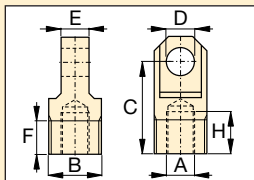
Retainer Nut
For locking foot or flange mountings. Tightens onto cylinder collar threads (included with foot and flange mounting kits)



Foot Mounting
Mounts onto cylinder collar



Flange Mounting
Mounts onto cylinder collar



Clevis Eye
Threads onto plunger or into cylinder base

Model Number	RD-Cyl: (tons)	Dimensions (in)						
		A	B	C	D	E	F	H
Foot Mounting with Retainer Nut								
AD-141	4	1.38	3.00	2.00	.41	.76	2.25	1.25
AD-171	9	2.00	4.00	2.88	.53	1.00	3.25	1.75
AD-181	16	2.63	5.00	3.76	.78	1.38	4.00	2.06
AD-191	25	3.25	6.26	4.62	1.03	1.76	4.88	2.50
Flange Mounting with Retainer Nut								
AD-142	4	1.38	3.88	3.09	.41	.75	-	-
AD-172	9	2.00	4.75	3.88	.41	1.00	-	-
AD-182	16	2.63	5.63	4.56	.53	1.38	-	-
AD-192	25	3.25	6.50	5.34	.66	1.75	-	-
Retainer Nut								
AD-143	4	1 ³ / ₈ "-12 UNF	2.25	1.81	.25	.38	-	-
AD-173	9	2"-12	3.00	2.50	.27	.50	-	-
AD-183	16	2 ³ / ₈ "-16	3.63	3.12	.27	.75	-	-
AD-193	25	3 ¹ / ₄ "-16	4.25	3.75	.27	1.00	-	-
Clevis Eye								
AD-150	4	1/2"-20	1 ¹ / ₈ "-20	1.12	.63	.63	.75	.94
AD-151	9	3/4"-16	1 ¹ / ₁₆ "-18	1.31	.75	1.00	1.00	.94
AD-152	16	1 ¹ / ₈ "-12	2 ³ / ₁₆ "-16	1.88	1.00	1.25	1.00	1.19
AD-153	25	1 ¹ / ₂ "-12	2 ³ / ₄ "-16	2.00	1.25	1.50	1.00	1.06

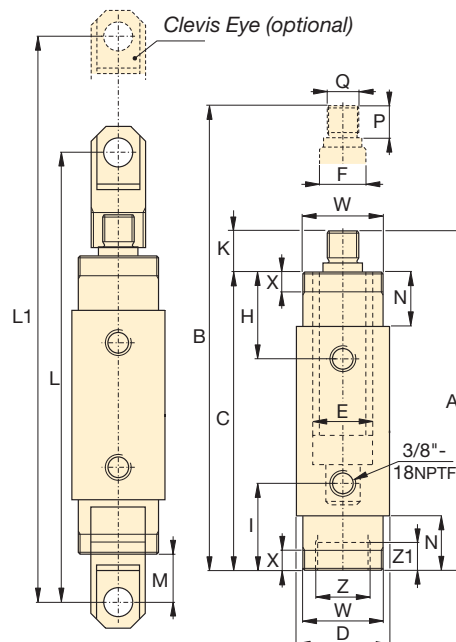
RD Series



Capacity:
4-25 tons

Stroke:
1.13-10.25 inches

Maximum Operating Pressure:
10,000 psi



Top to Ret. Port H (in)	Bottom to Adv. Port I (in)	Plunger Protrusion K (in)	Clevis Eye Mounting Dimensions			Neck Length N (in)	Plunger Thread Length P (in)	Plunger External Thread Q (in)	Cylinder Mounting Dimensions (in)				Wt. (lbs)	Model Number
			L (in)	L1 (in)	M (in)				Collar Thread W	Collar Thread Length X	Int. Base Thread Z	Int. Base Thread Length Z1		
1.88	1.88	.94	10.12	11.25	1.61	1.13	.75	1/2"-20	1 ³ / ₈ "-12	.44	1 ¹ / ₈ "-20	.35	4.8	RD-41
1.88	1.88	.94	12.12	15.25	1.61	1.13	.75	1/2"-20	1 ³ / ₈ "-12	.44	1 ¹ / ₈ "-20	.35	6.4	RD-43
1.88	1.88	.94	15.12	21.25	1.61	1.13	.75	1/2"-20	1 ³ / ₈ "-12	.44	1 ¹ / ₈ "-20	.35	9.0	RD-46
2.27	2.27	.98	11.61	12.76	1.50	1.50	.75	3/4"-16	2"-12	.56	1 ¹ / ₁₆ "-18	.55	9.0	RD-91
2.27	2.27	.98	13.66	16.79	1.50	1.50	.75	3/4"-16	2"-12	.56	1 ¹ / ₁₆ "-18	.55	11.0	RD-93
2.27	2.27	.98	16.66	22.79	1.50	1.50	.75	3/4"-16	2"-12	.56	1 ¹ / ₁₆ "-18	.55	14.0	RD-96
2.27	2.27	.98	20.66	30.79	1.50	1.50	.75	3/4"-16	2"-12	.56	1 ¹ / ₁₆ "-18	.55	19.0	RD-910
2.90	2.90	1.19	19.32	25.57	2.05	2.13	1.00	1 ¹ / ₈ "-12	2 ⁵ / ₈ "-16	.88	2 ³ / ₁₆ "-16	.94	22.0	RD-166
2.90	2.90	1.19	23.32	33.57	2.05	2.13	1.00	1 ¹ / ₈ "-12	2 ⁵ / ₈ "-16	.88	2 ³ / ₁₆ "-16	.94	29.0	RD-1610
3.50	3.50	1.06	20.86	27.11	2.09	2.75	1.00	1 ¹ / ₂ "-12	3 ¹ / ₄ "-16	1.13	2 ³ / ₄ "-16	1.02	36.0	RD-256
3.50	3.50	1.08	24.86	35.11	2.09	2.75	1.00	1 ¹ / ₂ "-12	3 ¹ / ₄ "-16	1.13	2 ³ / ₄ "-16	1.02	46.0	RD-2510